

# PROVEN PERFORMANCE IN HANDLING LOADS UP TO 2500 LBS

Burr Engineering HD-Series actuators have proven themselves time after time in a wide number of industrial and consumer applications including a few listed below:

- Off-road equipment vehicles
- Construction equipment
- Agricultural equipment
- Adjustable seat mechanisms
- Air control and venting equipment
- Satellite dish positioners
- Lift tables
- Personal handicap equipment

Three optional gear ratios (17:1, 25:1 and 55:1), combined with acme screw posts, as well as 3 optional acme nuts provide convenient flexibility in speed, capacity and life expectations.

## Features:

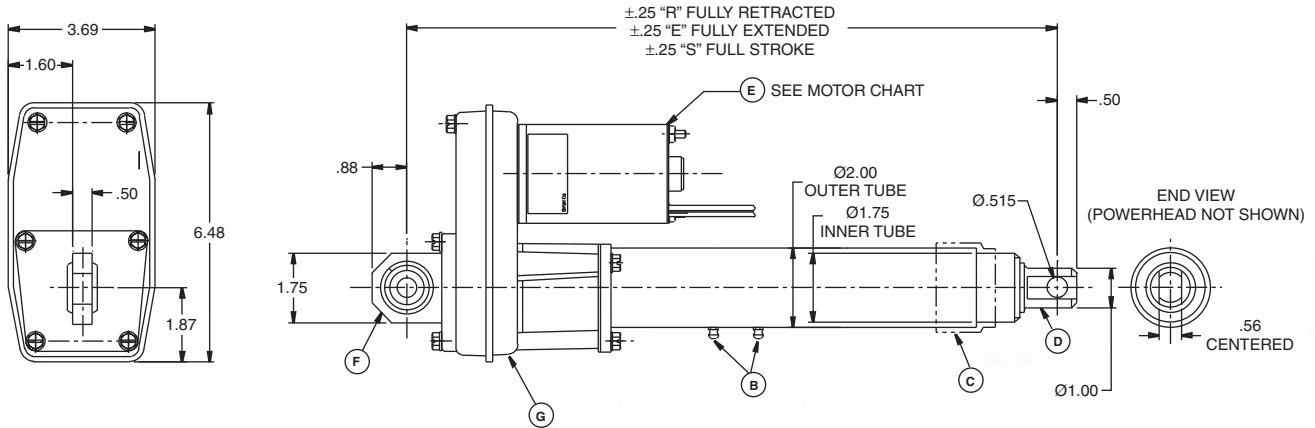
- 12, 24 or 36 Volt DC
- 110 or 220 Volt AC
- Standard Strokes to 24"
- Longer Stroke Lengths Available
- Die-cast Aluminum Powerheads
- Factory Set Torque Limiters
- .75-6 Acme Screw
- Zinc Plated Inner and Outer Tubes
- Capacities to 2500 lbs.
- Static Load 5000 lbs.
- 17:1, 25:1 and 55:1 Gear Ratios

# HD-Series



**BURR**  
ENGINEERING AND  
DEVELOPMENT CO.

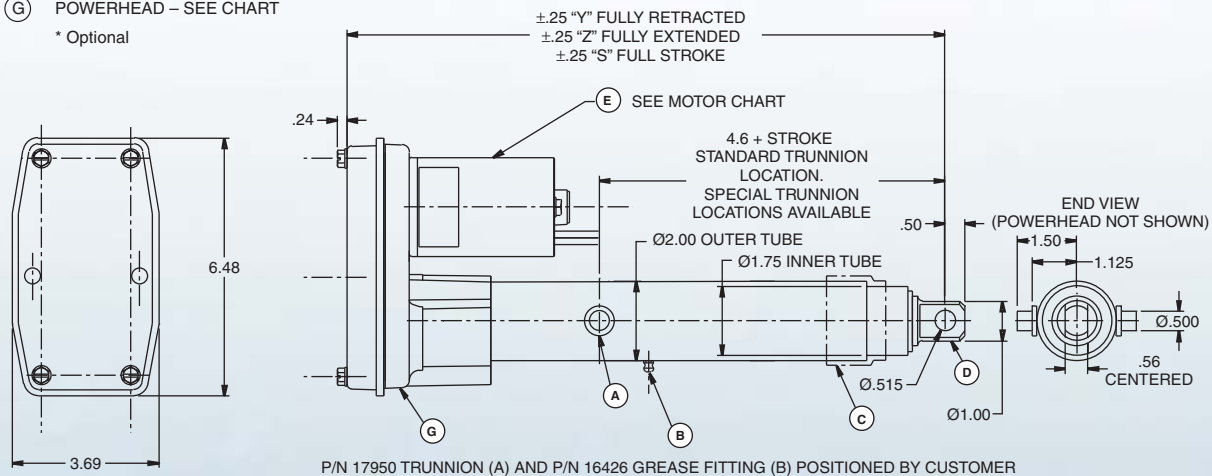




- (A) P/N 17950 TRUNNION (SET OF 2)\*
- (B) P/N 16426 GREASE FITTINGS\*
- (C) P/N 15611 WEATHER SEAL\*
- (D) P/N 16418 CLEVIS SHORT\*
- (E) MOTOR – SEE CHART\*
- (F) P/N 17467 IN-LINE MOUNT BRACKET\*
- (G) POWERHEAD – SEE CHART

\* Optional

**NOTE: Custom ball screw actuators available by special order. Call for detailed information.**



P/N 17950 TRUNNION (A) AND P/N 16426 GREASE FITTING (B) POSITIONED BY CUSTOMER

Temperature Range: 90°C, 194°F Maximum to -35°C, -30°F Minimum

## POST ASSEMBLIES

Post Ass'y	Type	Stroke "S"	Retracted "R"	Extended "E"	Retracted "Y"	Extended "Z"
22300	.75-6 Acme Screw Powder Metal	4.12	15.47	19.59	14.22	18.34
29241	.75-6 Acme Screw Powder Metal	6.12	17.47	23.59	16.22	22.34
22310	.75-6 Acme Screw Powder Metal	8.12	19.47	27.59	18.22	26.34
22315	.75-6 Acme Screw Powder Metal	12.12	23.47	35.59	22.22	34.34
22320	.75-6 Acme Screw Powder Metal	18.12	29.47	47.59	28.22	46.34
22325	.75-6 Acme Screw Powder Metal	24.12	35.47	59.59	34.22	58.34
22330	.75-6 Acme Screw Powder Metal	36.12	47.47	83.59	46.22	82.34
22335	.75-6 Acme Screw Powder Metal	48.12	59.47	107.59	58.22	106.34



**BURR**  
ENGINEERING AND  
DEVELOPMENT CO.

### SPEED vs. LOAD (Inches/Second)

LOAD LBS.	17:1	25:1	55:1
2500	N/A	N/A	.22
2000	N/A	N/A	.24
1500	N/A	.37	.26
1000	N/A	.45	.28
750	.75	.49	.30
500	.82	.51	.30
MOTOR	19697	27487	19697

**Note:** Speed listed is for acme screw actuators equipped with powdered steel nuts. For a bronze nut use a multiplier of 1.2 to compute speed. For a delrin nut use a multiplier of 1.35 to compute speed.

### AMPERAGE DRAW (Shown at 12 Volts DC)

LOAD LBS.	17:1	25:1	55:1
2500	N/A	N/A	28-31
2000	N/A	N/A	24-26
1500	N/A	28-31	19-20
1000	N/A	21-22	14-15
750	30-32	16-17	11-12
500	24-27	12-14	9-10
MOTOR	19697	27487	19697

**Note:** Amperage listed is for acme screw actuators equipped with powdered steel nuts. For a bronze nut use a multiplier of .7 to compute amperage. For a delrin nut use a multiplier of .6 to compute amperage.

### MOTOR CHART <sup>Ⓔ</sup>

Part No.	Voltage	Diameter (inches)	No Load RPM	Max. Load Torque (in.oz.)
16263	12 VDC	2.50	6800	70
19697	12 VDC	3.00	5800	80
23959	24 VDC	2.50	3800	80
21117	24 VDC	3.00	6000	75
14090	36 VDC	2.50	6800	40
25568	110 VAC	3.38	3400	36
25566	220 VAC	3.38	3400	36
26161	12 VDC	3.00	5000	80
27487	12 VDC	3.00	5500	80

### POWERHEAD LESS MOTOR <sup>Ⓒ</sup>

Part No.	Gear Ratio
17870	17:1
29239	25:1
17865	55:1

*HD-Series*



**BURR**  
ENGINEERING AND  
DEVELOPMENT CO.

730 E. Michigan Avenue • Battle Creek, MI 49014  
P.O. Box 460 • Battle Creek, MI 49016 U.S.A.  
Phone: (269) 966-3122 • Fax: (269) 965-2389  
E-mail: sales@burractuators.com • Web: [www.burractuators.com](http://www.burractuators.com)