



COMPAC 300 AND 1000 POUND ACME SCREW H.D. ACTUATORS

HEAVY-DUTY ACTUATORS

Burr Engineering's Compac Series of actuators have a proven history to reliability and dependability in a wide range of applications that include: construction equipment, off-road and agricultural products, seat mechanisms, air flow control equipment to name just a few.

Three gear ratios combined with quality acme screws provide a wide range of speeds and capacities.

Features:

- 12, 24, 36, Volt, DC
- 110, 220, Volt, AC
- Stroke Lengths to 48"
- Die Cast Aluminum Power Heads
- Torque Limiter or Limit Switch End of Stroke Operation
- Zinc Plated Inner and Outer Tubes
- 5000 lbs. Static Load
- 17:1, 25:1, and 55:1 Gear Ratios

Handles Loads up to 1000 Pounds

31000

ALL FIGURES BASED USING 16263 MOTOR EXCEPT 25:1 RATIO SEE NOTE.**

SPEED VS LOAD COMPAC 300* AND 1000

LOAD	17 to 1 Ratio	**25 to 1 Ratio	55 to 1 Ratio
1000 lbs.	NA	NA	.250
750 lbs.	NA	.4375	.270
500 lbs.	NA	.444	.291
300 lbs.	.875	.490	.305
100 lbs.	1.000	.500	.325
0 lbs.	1.111	.555	.343

Note: COMPAC 300 Actuators rated to 300 lb. capacity only
FIGURES ARE INCHES PER SECOND
** CURRENTLY AVAILABLE IN 12 VOLT DC ONLY (P/N 27487 MOTOR, 5000 NO LOAD RPM)

AMPERAGE DRAW (SHOWN AT 12 VOLTS, DC)

LOAD	17 to 1 Ratio	25 to 1 Ratio	55 to 1 Ratio
1000 lbs.	NA	NA	16
500 lbs.	NA	18	10
300 lbs.	18	12	8
100 lbs.	10	8	6
0 lbs.	3.5	3.5	3.5

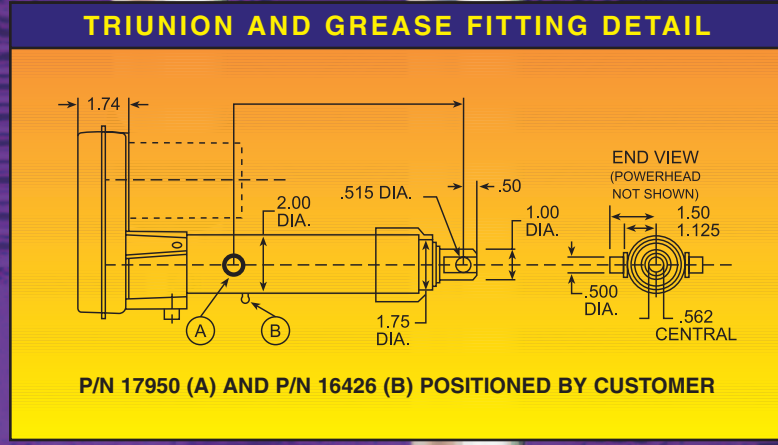
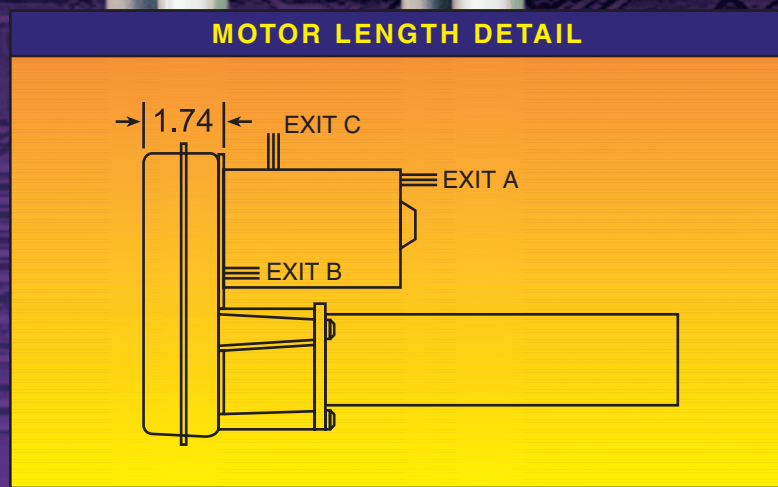
FIGURES ARE IN AMPS

MOTOR LENGTH COMPAC 300 AND 1000

Motor P/N	Voltage	Motor Diameter	Min. Length	Exit	R.P.M. No Load
16263	12 VDC	2.5"	11.5"	A	6800
19697	12 VDC	3"	10.5"	A	5800
21117	24 VDC	3"	10.5"	A	6000
14090	36 VDC	2.5"	10.5"	A	6800
25567	110 VDC	3.38"	15"	C	3400
25566	220 VDC	3.38"	17"	C	3400
27487	12 VDC	3"	5"	B	5000

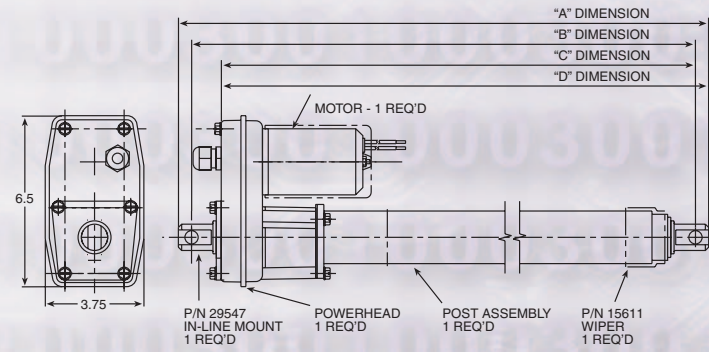
Note: To compute dimension for Limit Switch design heads add 2" to measurement in "Dimension X" column above.

- ### OPTION LIST
- P/N 17950 Trunions (set of 2)
 - P/N 16426 Grease Fitting
 - P/N 15611 Weather Seal (Outer Tube to Inner Tube)
 - P/N 18746 Weather Seal (Head to Tube Seal)
 - P/N 14701 Rod End, Self-Aligning
 - P/N 743-0054 Water-Tight Connector
- ### OPTIONAL MOTOR SLEEVES
- P/N 31311 2.5 inches
 - P/N 31312 3 inches
 - P/N 25484 3.38 inches
- Motors (see chart for available motors)
- Note: Digital and analog feedback available with COMPAC 300 and COMPAC 1000 Limit Switch models.



COMPAC 1000 SPECIFICATIONS (TORQUE LIMITER DESIGN)

Part #	Gear Ratio	Stroke	Retracted "A"	Retracted "B"	Retracted "C"	Retracted "D"
27782	17:1	4	13.000	12.000	10.870	11.370
27783	25:1	4	13.000	12.000	10.870	11.370
27784	55:1	4	13.000	12.000	10.870	11.370
27785	17:1	6	15.000	14.000	12.870	13.370
27786	25:1	6	15.000	14.000	12.870	13.370
27787	55:1	6	15.000	14.000	12.870	13.370
27788	17:1	8	17.000	16.000	14.870	15.370
27789	25:1	8	17.000	16.000	14.870	15.370
27790	55:1	8	17.000	16.000	14.870	15.370
27791	17:1	12	21.000	20.000	18.870	19.370
27792	25:1	12	21.000	20.000	18.870	19.370
27793	55:1	12	21.000	20.000	18.870	19.370
27794	17:1	18	27.000	26.000	24.870	25.370
27795	25:1	18	27.000	26.000	24.870	25.370
27796	55:1	18	27.000	26.000	24.870	25.370
27797	17:1	24	33.000	32.000	30.870	31.370
27798	25:1	24	33.000	32.000	30.870	31.370
27799	55:1	24	33.000	32.000	30.870	31.370



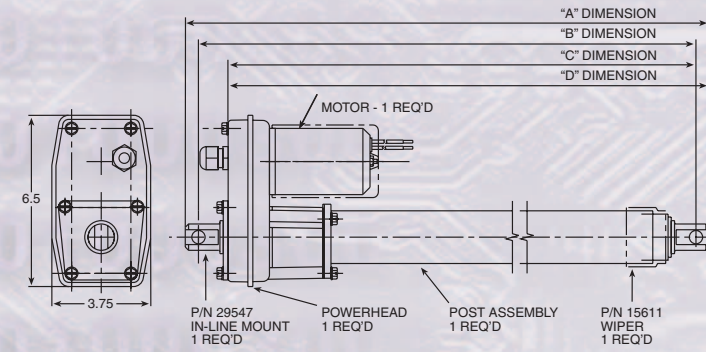
SPECIFICATIONS

- STROKE*: 4", 6", 8", 12", 18", 24"
- LOAD: 1000 LBS. MAX.
17:1 - 750 MAX.
- GEAR REDUCTION
17:1, 25:1, 55:1
- MOTOR: SEE CHART ON BACK PAGE
- SCREW: 3/4-6 ACME
- SPEED AND AMPERAGE
SEE CHART ON BACK PAGE
- TUBE SPECIFICATIONS:
OUTER TUBE: 2" DIA. X .109" WALL
INNER TUBE: 1-3/4" DIA. X .134" WALL
- PROTECTION: TORQUE LIMITER

* CUSTOM STROKES AVAILABLE

COMPAC 300 SPECIFICATIONS (TORQUE LIMITER DESIGN)

Part #	Gear Ratio	Stroke	Retracted "A"	Retracted "B"	Retracted "C"	Retracted "D"
29519	17:1	4	11.625	10.625	9.495	9.995
27800	25:1	4	11.625	10.625	9.495	9.995
29520	55:1	4	11.625	10.625	9.495	9.995
29521	17:1	6	13.625	12.625	11.495	11.995
27801	25:1	6	13.625	12.625	11.495	11.995
29522	55:1	6	13.625	12.625	11.495	11.995
29523	17:1	8	15.625	14.625	13.495	13.995
27802	25:1	8	15.625	14.625	13.495	13.995
29524	55:1	8	15.625	14.625	13.495	13.995
29525	17:1	12	19.625	18.625	17.495	17.995
27803	25:1	12	19.625	18.625	17.495	17.995
29526	55:1	12	19.625	18.625	17.495	17.995
29527	17:1	18	25.624	24.625	23.495	23.995
27804	25:1	18	25.624	24.625	23.495	23.995
29528	55:1	18	25.624	24.625	23.495	23.995
29529	17:1	24	31.625	30.625	29.495	29.995
27805	25:1	24	31.625	30.625	29.495	29.995
29530	55:1	24	31.625	30.625	29.495	29.995



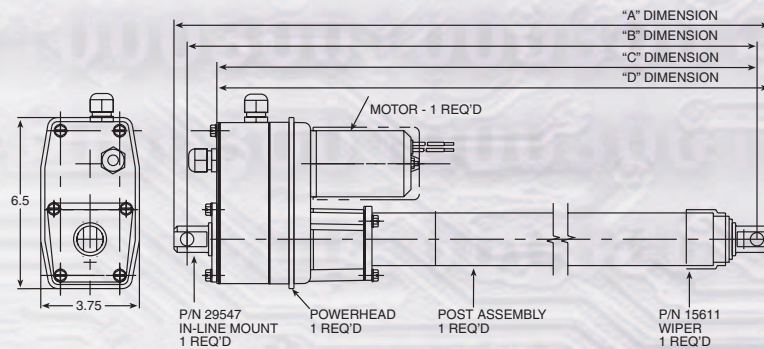
SPECIFICATIONS

- STROKE*: 4", 6", 8", 12", 18", 24"
- LOAD: 300 LBS. MAX.
- GEAR REDUCTION
17:1, 25:1, 55:1
- MOTOR: SEE CHART ON BACK PAGE
- SCREW: 3/4-6 ACME
- SPEED AND AMPERAGE
SEE CHART ON BACK PAGE
- TUBE SPECIFICATIONS:
OUTER TUBE: 2" DIA. X .109" WALL
INNER TUBE: 1-3/4" DIA. X .134" WALL
- PROTECTION: TORQUE LIMITER

* CUSTOM STROKES AVAILABLE

COMPAC 1000 SPECIFICATIONS (LIMIT SWITCH DESIGN)

Part #	Gear Ratio	Stroke	Retracted "A"	Retracted "B"	Retracted "C"	Retracted "D"
27744	17:1	4	16.625	15.625	14.495	14.995
27745	25:1	4	16.625	15.625	14.495	14.995
27746	55:1	4	16.625	15.625	14.495	14.995
27747	17:1	6	18.625	17.625	16.495	16.995
27748	25:1	6	18.625	17.625	16.495	16.995
27749	55:1	6	18.625	17.625	16.495	16.995
27750	17:1	8	20.625	19.625	18.495	18.995
27751	25:1	8	20.625	19.625	18.495	18.995
27752	55:1	8	20.625	19.625	18.495	18.995
27753	17:1	12	24.625	23.625	22.495	22.995
27754	25:1	12	24.625	23.625	22.495	22.995
27755	55:1	12	24.625	23.625	22.495	22.995
27756	17:1	18	30.625	29.625	28.495	28.995
27757	25:1	18	30.625	29.625	28.495	28.995
27758	55:1	18	30.625	29.625	28.495	28.995
27759	17:1	24	36.625	35.625	34.495	34.995
27760	25:1	24	36.625	35.625	34.495	34.995
27761	55:1	24	36.625	35.625	34.495	34.995



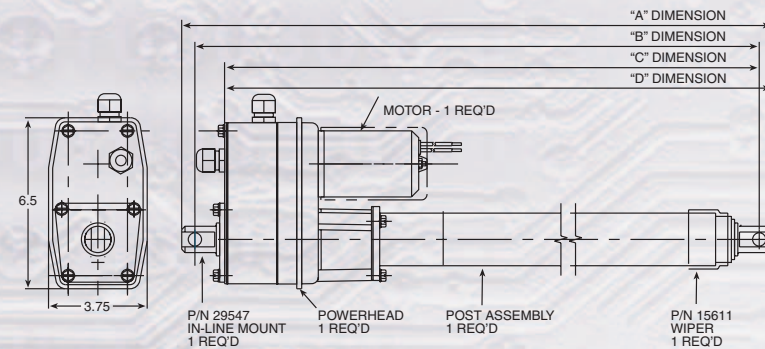
SPECIFICATIONS

- STROKE*: 4", 6", 8", 12", 18", 24"
- LOAD: 1000 LBS. MAX.
- GEAR REDUCTION
17:1, 25:1, 55:1
- MOTOR: SEE CHART ON BACK PAGE
- SCREW: 3/4-6 ACME
- SPEED AND AMPERAGE
SEE CHART ON BACK PAGE
- TUBE SPECIFICATIONS:
OUTER TUBE: 2" DIA. X .109" WALL
INNER TUBE: 1-3/4" DIA. X .134" WALL
- PROTECTION: TORQUE LIMITER

* CUSTOM STROKES AVAILABLE

COMPAC 300 SPECIFICATIONS (LIMIT SWITCH DESIGN)

Part #	Gear Ratio	Stroke	Retracted "A"	Retracted "B"	Retracted "C"	Retracted "D"
27762	17:1	4	15.313	14.313	13.183	13.683
27763	25:1	4	15.313	14.313	13.183	13.683
27764	55:1	4	15.313	14.313	13.183	13.683
27765	17:1	6	17.313	16.313	15.183	15.683
27766	25:1	6	17.313	16.313	15.183	15.683
27767	55:1	6	17.313	16.313	15.183	15.683
27768	17:1	8	19.313	18.313	17.183	17.683
27769	25:1	8	19.313	18.313	17.183	17.683
27770	55:1	8	19.313	18.313	17.183	17.683
27771	17:1	12	23.313	22.313	21.183	21.683
27772	25:1	12	23.313	22.313	21.183	21.683
27773	55:1	12	23.313	22.313	21.183	21.683
27774	17:1	18	29.313	28.313	27.183	27.683
27775	25:1	18	29.313	28.313	27.183	27.683
27776	55:1	18	29.313	28.313	27.183	27.683
27777	17:1	24	35.313	34.313	33.183	33.683
27778	25:1	24	35.313	34.313	33.183	33.683
27779	55:1	24	35.313	34.313	33.183	33.683



SPECIFICATIONS

- STROKE*: 4", 6", 8", 12", 18", 24"
- LOAD: 300 LBS. MAX.
- GEAR REDUCTION
17:1, 25:1, 55:1
- MOTOR: SEE CHART ON BACK PAGE
- SCREW: 3/4-6 ACME
- SPEED AND AMPERAGE
SEE CHART ON BACK PAGE
- TUBE SPECIFICATIONS:
OUTER TUBE: 2" DIA. X .109" WALL
INNER TUBE: 1-3/4" DIA. X .134" WALL
- PROTECTION: TORQUE LIMITER

* CUSTOM STROKES AVAILABLE

3000



ENGINEERED, BUILT, AND SERVICED BY AMERICAN WORKERS IN THE U.S.A.

BURR

Burr Engineering & Development Corporation
730 East Michigan Avenue, P.O. Box 460
Battle Creek, Michigan 49016 USA
269-966-3122 / fax 269-965-2389
www.burractuators.com